



GAT MONTHLY MEMBERSHIP PROGRESS REPORT

Results as of: 7/31/2022

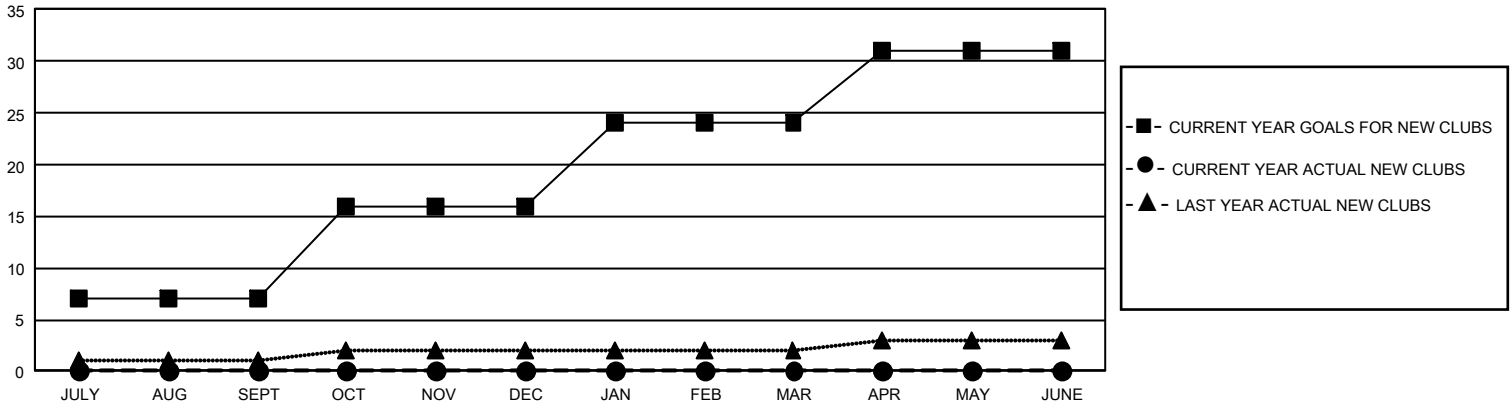
GMT Constitutional Area 1, Group J

REPORT DOES NOT INCLUDE CLUBS IN UNDISTRICTED AREAS.

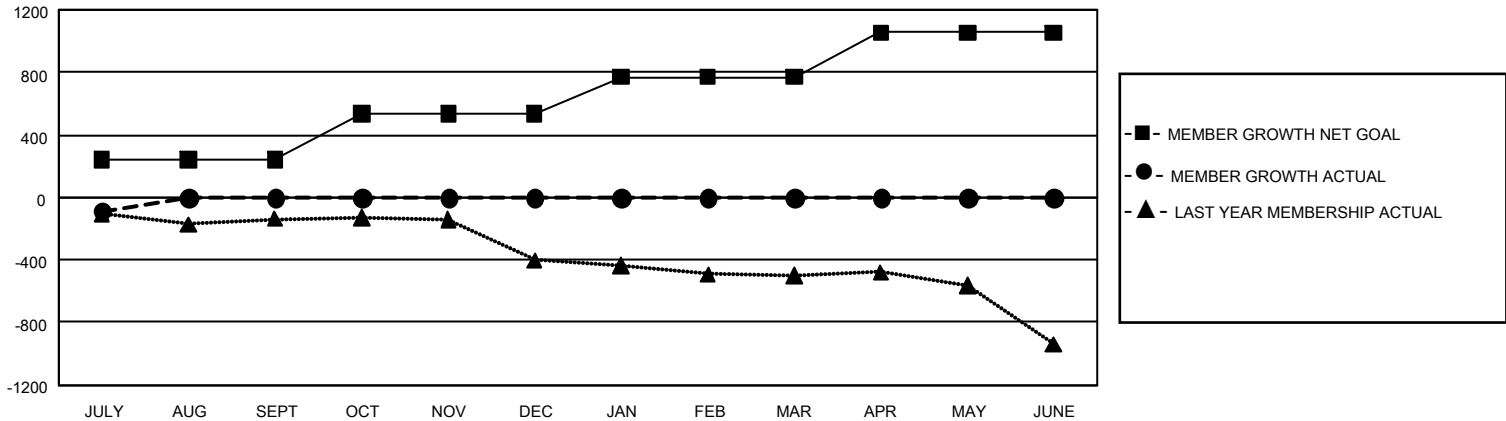
Clubs			
RESULTS FOR 2022-2023			
QUARTER	NEW CLUB GOAL	NEW CLUBS	DROPPED CLUBS
JULY/AUG/SEPT	21	0	4
OCT/NOV/DEC	27	0	0
JAN/FEB/MAR	24	0	0
APR/MAY/JUNE	21	0	0

Members			
RESULTS FOR 2022-2023			
QUARTER	MEMBER GROWTH NET GOAL	MEMBER GROWTH ACTUAL	DROPPED MEMBERS ACTUAL (including transfers)
JULY/AUG/SEPT	241	135	205
OCT/NOV/DEC	297	0	0
JAN/FEB/MAR	231	0	0
APR/MAY/JUNE	287	0	0

GOALS AND ACTUAL NEW CLUBS CUMULATIVE



GOALS AND ACTUAL MEMBERS CUMULATIVE



DROPPED CLUBS: 4	74 CLUBS OF 894 ADDED 1 OR MORE NEW MEMBERS	<u>GENDER DISTRIBUTION</u>	
		MALE	14,363 (70.09%)
<u>DROPPED MEMBERS</u>		FEMALE	6,128 (29.90%)
DECEASED	28	NON BINARY	1 (0.00%)
CLUB CANCELLED	9	PREFER NOT TO ANSWER	1 (0.00%)
OTHER	168	TOTAL FAMILY UNIT MEMBERS	3,973
TOTAL	205	FAMILY MEMBERS PAYING HALF DUES	2,025

[CLICK HERE FOR CUMULATIVE MEMBERSHIP DATA](#)